

Flamenco in Seville

2024



Sevilla.

The Flamenco

Flamenco is music, song, dance, poetry, feeling... and a whole philosophy of life.

Discover the authentic meanings that this incomparable demonstration of popular art can reach.

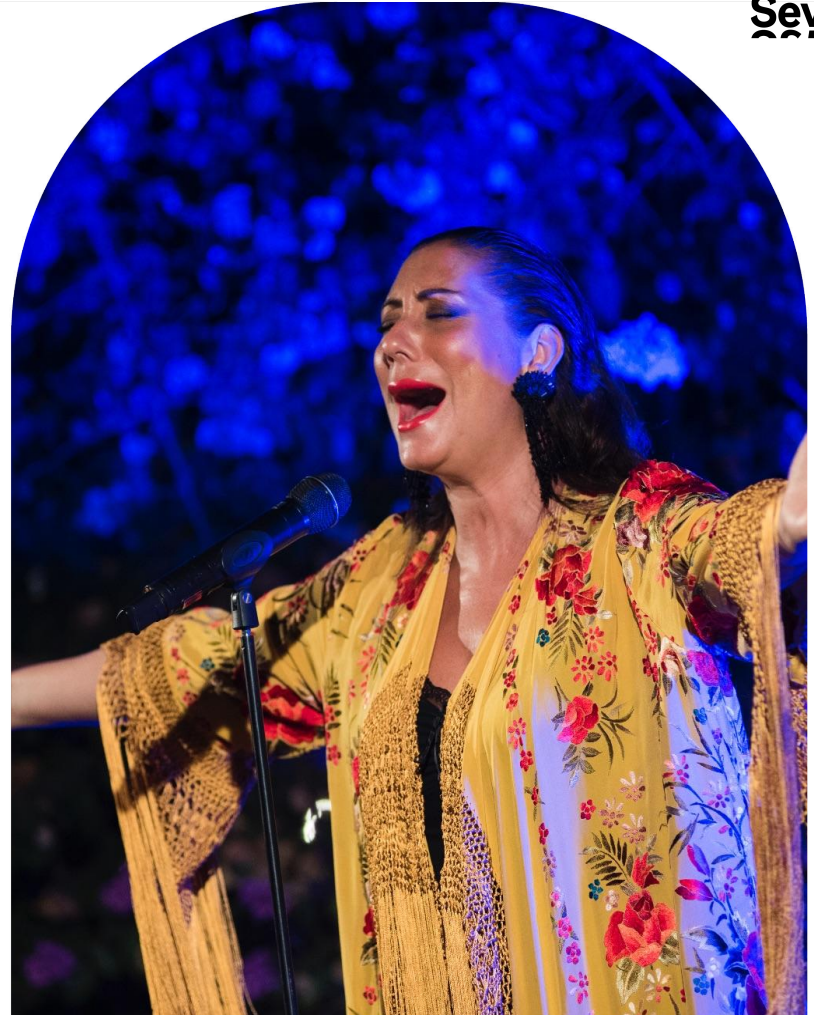
Flamenco is surely the purest expression of Andalusian folklore. It is said that its origins are related to the arrival of the gypsies in the 15th century to the Cadiz countryside of Jerez and Seville. In the mid-19th century it became popular through the *café cantantes* (singing *café*s). The first of these *café cantantes* opened in Seville around 1885, later spreading to Andalusia and Madrid. Until then, flamenco had never left family gatherings or private parties.



The Flamenco

In Seville you can enjoy the daily performance of this art in all its splendour in the well-known flamenco tablaos - direct heirs of the old cafés cantantes -, in the peñas of the neighbourhoods, in thematic spaces, in certain bars and, of course, in festivals such as the Biennial.

The Bienal Flamenco, which is held in the city every two years and is ended by the leading figures of flamenco singing and dancing, stands out for its enormous importance. This incomparable event has been running for more than twenty years, and is an exceptional event for projecting the value of Flamenco to the rest of the world, an art form that has already been declared by UNESCO as Intangible Cultural Heritage of Humanity.



Tablaos Flamenco

Tablaos Flamenco



El Arenal

C/ Rodo, 7.

(+34) 954 216 492

info@tablaaelarenal.com

www.tablaaelarenal.com

Schedules

Daily Shows: 7:00pm. to 8:00pm. (dinner/drinks
6:00pm. to 7:00pm) and 9:30pm. to 10:00pm.
(dinner/drinks to 8:45pm. to 9:30pm.)

Prices

Show and drink: €44

Show and tapas for dinner: €68'20

Show and dinner à la carte: €82'50

Capacity: 100

Auditorio Álvarez Quintero

C/ Álvarez Quintero, 48.

(+34) 605 130 130

info@tablaalvarezquintero.com

www.tablaoalvarezquintero.com

Schedules

Daily show: 7:00pm. and 8:30pm.

Prices

Show: €22

Students/Pensioners: €16

Children aged 7 to 12: €12

Capacity: 85

La Cantaora

C/ Albareda, 22.

(+34) 622 724 872

info@flamencolacantaora.com

reservas@flamencolacantaora.com

www.flamencolacantaora.com

Schedules

Daily show: 7:00pm. and 9:00pm.

Prices

Show with a drink: €25

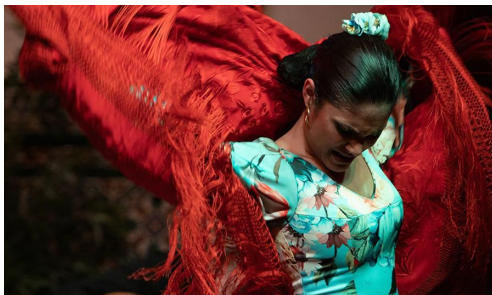
Show with tapas: €60

Show with a la carte dinner: €70

Show with Fair dinner: €85

Capacity: 50

Tablaos Flamenco



Casa del Flamenco

C/ Ximenez de Enciso, 28.
(+34) 955 029 999 / (+34) 954 500 595
info@lacasadelflencosevilla.com
www.lacasadelflencosevilla.com

Schedules

Daily shows: Winter: 7:00pm;
Spring/Autumn: 7:00pm. and 8:00pm.;
Summer: 8:30pm.
Ticket Office from 10.00am. to 9:30pm.

Prices

Show: €22
Students/PRM: €17
Children aged 6 to 12: €11
Children under 6 are not allowed

Capacity: 60

Casa de la Guitarra

C/ Mesón del Moro, 12.
(+34) 954 224 093
reservas@casadelaquitarra.es
www.flamencoensevilla.com

Schedules

Daily show: 07:30pm to 08:30pm and
09:00 to 10:00 pm.

Prices

Show: €20
Students/Pensioners: €15
Children under 12: €12

Capacity: 60

Casa de la Memoria Flamenco Museum

C/ Cuna, 6. / (+34) 954 560 670
flamencomemoria@gmail.com
www.casadela memoria.es

Schedules

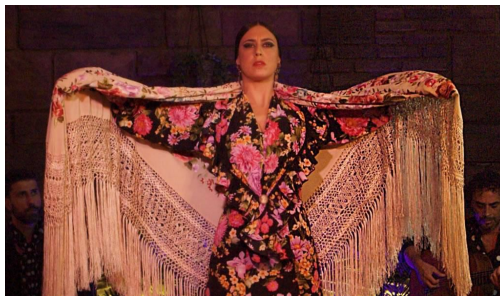
Free guided visit to the Museo Romántico del Flamenco:
11:00am. to 2:00pm. from Monday to Saturday.
Show: Tuesday to Saturday: 6:00pm. to 7:00pm. and
7:30pm. to 08:30pm.

Prices

Show: €22
Students / Residents: €18
Children (6-11): €12
Children under 6 are not allowed

Capacity: 90-100

Tablaos Flamenco



La Cava de Triana. Baraka Sala Flamenca

C/ Pureza, 107

(+34) 640 751 238 / 640 751 245

reservas@barakasalaflamenca.com

www.barakasalaflamenca.com

Schedules

Daily Show: 7:00pm.

Prices

Show with a drink: €25

Children aged 4 to 12 / Pensioners: €20

Capacity: 50

Centro Flamenco de Sevilla

C/ Francos, 33.

(+34) 656 505 050 / 956 505 050

info@tablaoflamenco.net

www.tablaoflamenco.net

Schedules

Daily show at 6:00pm. and at 8:00pm.

Prices

VIP: 35€ (first row + table+ drink).

General: 25€

Students from 13-22 years 18€

Retired (+65 años): 18€

Children from 6 to 12 years 12€.

Free for children under 5 years

Capacity: 32

Flamenco en Sevilla

C/ Alemanes, 19.

(+34) 634 423 009

info@flamencoensevilla.es

www.flamencoensevilla.es

Schedules

Daily show: 6:00pm. and 8:00pm.

Prices

Show: €25

Students up to 25 years old/Pensioners: €18

Children aged 6 to 12: €12

VIP Ticket: €35

Tablaos Flamenco



Los Gallos

Plaza de Santa Cruz, 11.

(+34) 954 216 981

info@tablaolosgallos.com

www.tablaolosgallos.com

Schedules

Daily shows: 7:00pm. to 8:15pm. and at 8:45pm.
to 10:00pm. Closed on Sundays in March.

Prices

Show €35 (Tablao 8 artists)

Children aged 6 to 10: €20

Capacity: 80

Museo del Baile Flamenco

C/ Manuel Rojas Marcos, 3.

(+34) 954 340 311

info@museoflamenco.com

www.museoflamenco.com

Schedules

Daily Shows: 5:00pm. 7:00pm. and 8:45 pm.
Museum Opening Hours: 11:00 am. to 6:00 pm.

Prices

Only museum: €10; Students/PRM: €8

Children aged 6 to 12: €6

Only shows: €25

Students/PRM: €18; Children: €12

Show + museum: €29

Students/PRM: €22; Children: €15

Capacity: 100

Orillas de Triana - Flamenquería

C/ Castilla, 94.

(+34) 955 226 411

reservas@flamenqueria.es

www.flamenqueria.es

Schedules

Show: Thursday, Friday, Saturday and
Sunday: at 8:30pm.

Prices

Show: €22

Students/Pensioners: €18

Capacity: 60

Tablaos Flamenco



Palacio Andaluz

C/ Matemáticos Rey Pastor y Castro, 4,
Isla Cartuja.

(+34) 954 534 720

comercial@elapalacioandaluz.com

www.elpalacioandaluz.com

Schedules

Daily Show: 7:00pm., 7:40pm., 9:30pm. and 10:10 pm.

Prices

Only Show: €26

Show with a drink: €46

Show with dinner: €71

Children aged 7 to 14: 50% discount

Wine Cellar Museum for free

Capacity: 500

Patio Sevillano

Paseo Cristóbal Colón, 11.

(+34) 954 214 120 / (+34) 954 222 068

elpatiosevillano@elpatiosevillano.com

www.elpatiosevillano.com

Schedules

Daily show: 7:00pm. and 9:30pm.

(consult website)

Prices

Show with a drink: €38

Show and menu dinner: €72

Show and tapas for dinner: €60

Capacity: 410

Pura Esencia Flamenco

C/ Betis, 56.

(+ 34) 667 588 161

www.puraesenciaflamenco.com

reservas@puraesenciaflamenco.com

Schedules

Daily show: at 8:00pm.

Prices

General Show: €25 (over 18 years old);

€11 (6-17 years old)

Front Row Show: €28 (over 18 years old);

€12 (6-17 years old)

Capacity: 50

Tablaos Flamenco



Sala Almoraima

C/ Pagés del Corro, 70.

(+34) 623 271 576

info@salaflamenca-almoraima.com

www.salaflamenca-almoraima.com

Schedules

Daily shows: 7pm-8pm and 8.30pm-9:30pm.

Prices

Show: €25

One drink included

Capacity: 55

Las Setas

Las Setas de la Encarnación

(+34) 608 660 270

reserva@tablaoflamecolassetas.com

www.tablaoflamecolassetas.com

Schedules

Daily shows: 6:30pm. and 8.30pm.

Prices

Show: €25

Ticket Premium+Cocktail: €38

Ticket VIP+Cocktail: €50

Children: 12-16 years old: €20

Children under 12 are not allowed

Capacity: 97

Tablao Flamenco Andalusi

C/ Arenal, 3

(+34) 678 236 079

info@tablaoflamencoandalusi.com

www.tablaoflamencoandalusi.com

Schedules

Daily Shows: 6:30pm. and 8:30pm.

Prices

Show: €24; Children aged 3 to 12 years: €12.

Show duration: 1 hour..

Photograph with artists, Water and souvenir.

Seating on a first-come (recommendation to arrive 15 minutes earlier).

Capacity: 50

Tablaos Flamenco



Tablao La Milonga

C/ Calle Corral del Rey, 22.

(+34) 624 681 563

info@lamilongatablao.com

www.lamilongatablao.com

Schedules

Shows from Thursday to Sunday at 6pm, 7:30pm.
and 9:00pm.

Prices

Show: €20 (one drink included)

€25 (one drink and one tapa included)

€30 (one drink and two tapas included)

Capacity: 30

Tablao Flamenco y escuela profesional de danza



Tablao Flamenco Duarte

C/ Hernando del Pulgar, 34.

(+34) 602 547 482

duartedanzaoficial@gmail.com

[Tablao Duarte](#)

Horarios

Shows friday and saturday 20:00h.

Precio

Entrada premium: 30€ Asientos filas 1 y 2.

Entrada general: 25€ Asientos a partir de la fila 3.

Entrada niños de 6 a 16 años (sin cumplir) 20€

Entrada gratis para niños de 0 a 6 años (sin cumplir) con
entrada de 1 adulto comprada.

Participación de alumnos de la escuela.

Capacity: 56

Flamenco Theatres

Flamenco Theatres



Casala Teatro

Plaza del Altozano, s/n.

Mercado de Triana, market stall 11 and 12.

(+34)651 643 455

info@casalateatro.com

www.casalateatro.com/inicio/taquilla/venta-online

Schedules

Every day flamenco show at 6:00 p.m.

Wide range of cultural activities (theater, magic)

Prices

Show: 35€. Reservation online or at the box office (one hour before the show).

Capacity: 28

Teatro Flamenco Sevilla

C/ Cuna, 15. Antiguo Teatro Pathé.

(+34) 681 948 360 / 687 535 527

reservas@teatroflamencosevilla.com

www.teatroflamencosevilla.com

Schedules

Daily show: 5:30pm. and 7:30pm.

Prices

General Show: €25; Students >13 years

old/Pensioners: €18; Children 6-12 years

old/Residents: €15. Premium Ticket: €34 (includes

premium seat, drink, meeting with the artists). Premium

Tapas Ticket: €49 (includes premium seat, drink, meeting

with the artists and a "tabla de ibéricos" with a "pincho de

tortilla").

Capacity: 320

Teatro Flamenco Triana

C/ Pureza, 76.

(+34) 954 217 058

reservas@teatroflamencotriana.com

www.teatroflamencotriana.com

Schedules

Daily Show: 7:30pm. and 9:00pm.

Prices

Show: €25

Students/Pensioners: €20

Children aged 4 to 12: €15.

Capacity: 100

Flamenco Spaces

Flamenco in Seville

Bars with Flamenco atmosphere

Zona Triana

El Rejoneo

C/ Betis, 31 B
(+34) 658 809 003

Lo Nuestro

C/ Betis, 31A
(+34) 658 809 003

Flamenco Esencia Triana

C/ Betis, 20
(+34) 654 111 508

La quedá

C/ Duarte, 3
(+34) 649 962 192

Lola de los Reyes Sala Flamenca

C/ Pureza, 107
(+34) 667 631 163 / (+34) 954 277 576

www.loladelosreyes.es

Lola Cazerola

C/ Castilla, 36
(+34) 670 665 680

Barrio de Santa Cruz

El Flamenquito

C/ San Fernando, 23
(+34) 647 291 799

La Carbonería

C/ Céspedes, 21 A
(+34) 954 563 755

Zona Alameda

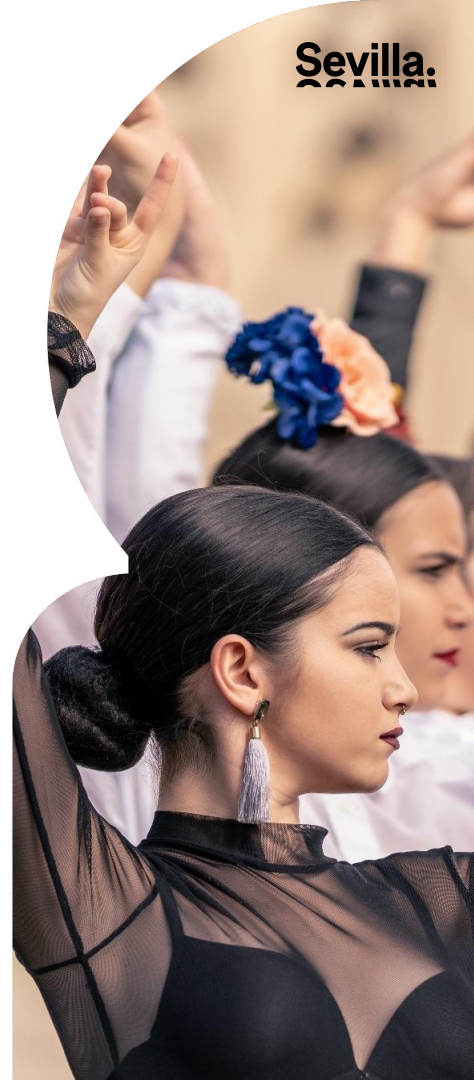
La Madriguera de Mai

C/ Arrayán, 23
(+34) 640 348 342

Los Martínez Copas

C/ Baños, 60
(+34) 600 650 075

Sevilla.



Flamenco in Seville

Flamenco Spaces

Peñas flamencas*

Peña Cultural Flamenca Torres Macarena

C/ Torrijano, 29
(+34) 605 931 254

Peña Flamenca el Carbonerillo

C/ Torrijano, 25
(+34) 635 837 229

Peña Flamenca la Fragua de Bellavista

C/ Gaspar Calderas, 15

Peña Flamenca el Cerro del Águila

C/ Tomás Pérez, 61

Peña Flamenca la Toná

Plaza La Toná, 28. Polígono San Pablo, zona Estación
Tren Santa Justa

*Consultar programación en el 010 / (+34) 955 010 010
o en www.guiatallama.com

Autres Espaces

Espacio de Creación Flamenca La Plazuela

Plaza Exaltación de Baco, 11, 1ª planta
Zona antigua fábrica de cerveza Cruzcampo.
(+34) 676 119 797
[Angeles Gabaldon](#)

[La Plazuela ECF](#)



Sevilla.





Sevilla.

Sevilla City Office

Teléfono: (+34) 954 471 232

visitasevilla@sevillacityoffice.es

www.visitasevilla.es

Paseo Marqués de Contadero s/n

Updated: January 2024

Schedules and prices are subject to changes, so it is recommended to confirm this information